



RORSCHACH



The name for this collection came from the famous *Rorschach test*.

noun: PSYCHOLOGY

noun: *Rorschach test*; plural noun: *Rorschach tests*

A type of projective test used in psychoanalysis, in which a standard set of symmetrical ink blots of different shapes and colors is presented one by one to the subject, who is asked to describe what they suggest or resemble.

The prints in this collection are made with fragments the famous ink bolts.

This is not a...

Romantization of any kind of depression
or neurological unbalance

With this collection we invite you to
allow yourself to feel deeply, love
intensely, cry hysterically and feel
joy, so your wounds can heal.





Intensamente Silk Gown

*Pyromania Pyromania
Pyromania Pyromania
Pyromania Pyromania*





Gut Feeling Pant





Lucid Dreams
Lucid Dreams







Emotional Baggage Utility Vest /Gut Feeling Pant

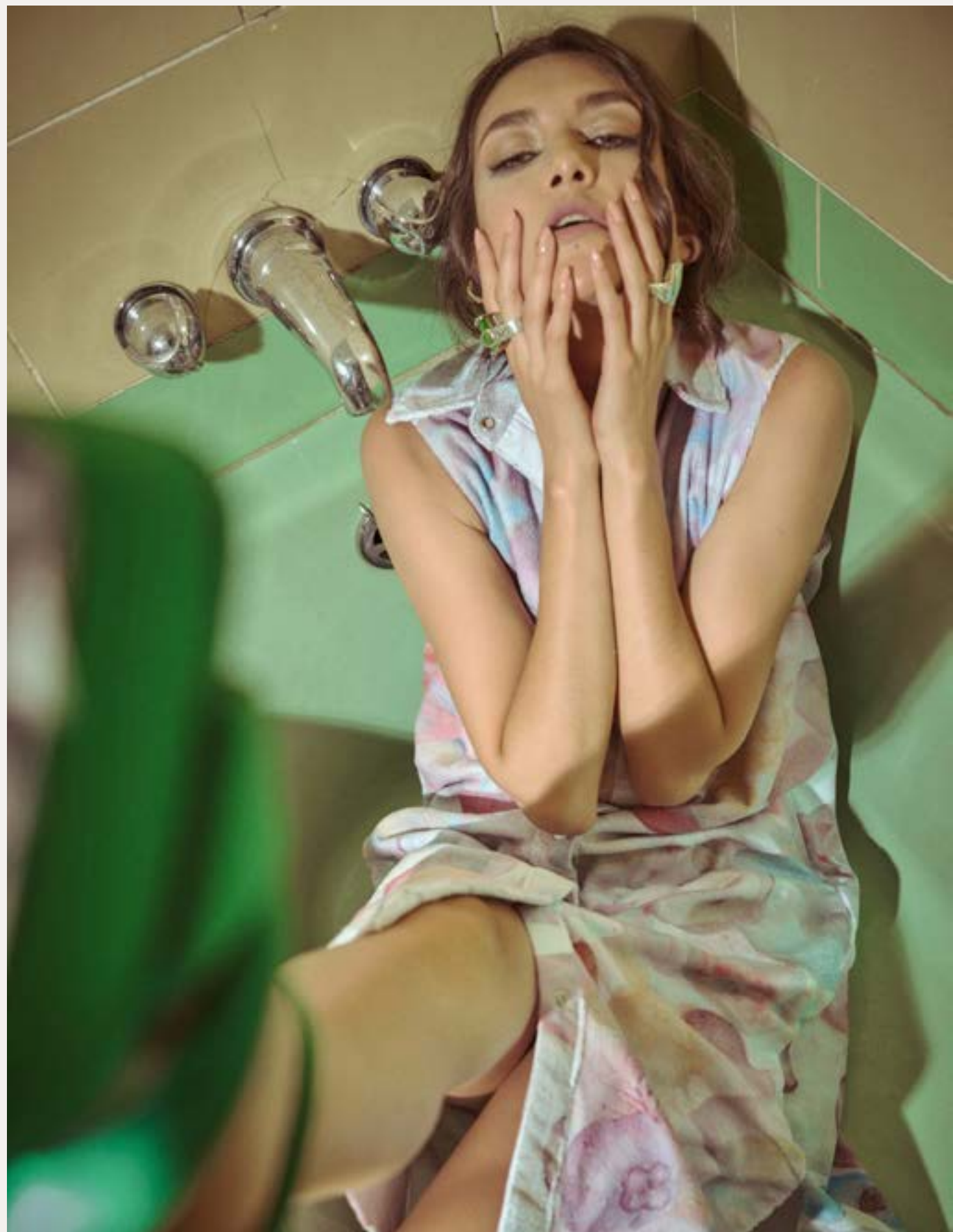
Under the Weather Shirt Dress





Mood Swings Top

Lucid Dreams
Lucid Dreams







Chacha Denim Mini Dress





Grab and Go Hoodie Dress





Euphoria
Euphoria
Euphoria

Emotional Baggage Terry Vest







Cacoon Top



Altered Reality Slip Dress





Blurry Vision
Blurry Vision
Blurry Vision



Mixed Emotions Skirt

The intention behind this collection is
"to allow yourself to feel."



Hold me close
Hold me close
Hold me close



Abrázame Fuerte Corset Dress



Melancholia
Melancholia
Melancholia



Dream Catcher Top / Poseidon Shorts



Dear "too much", "too sensitive",
"emotionally unstable", "clingy",
"intense", "PHYSICO", "khu-khu",
this is for you...

This collection's inspiration
came from *Judy's* background in
psychology and her emphatic nature.
It started as A Coping Elixir for
post-partum depression.

After being inspired in designing for a cause, we created:

A Flor de Piel.

This project was born with the idea of using fashion to make people aware of mental health by selling t-shirts with phrases focused on our goal.

Follow us on Instagram

[@somosafloardepiel](https://www.instagram.com/somosafloardepiel)

& [@theattelier](https://www.instagram.com/theattelier)



att/elier